

## How to import still images from Photoshop into Final Cut Pro.

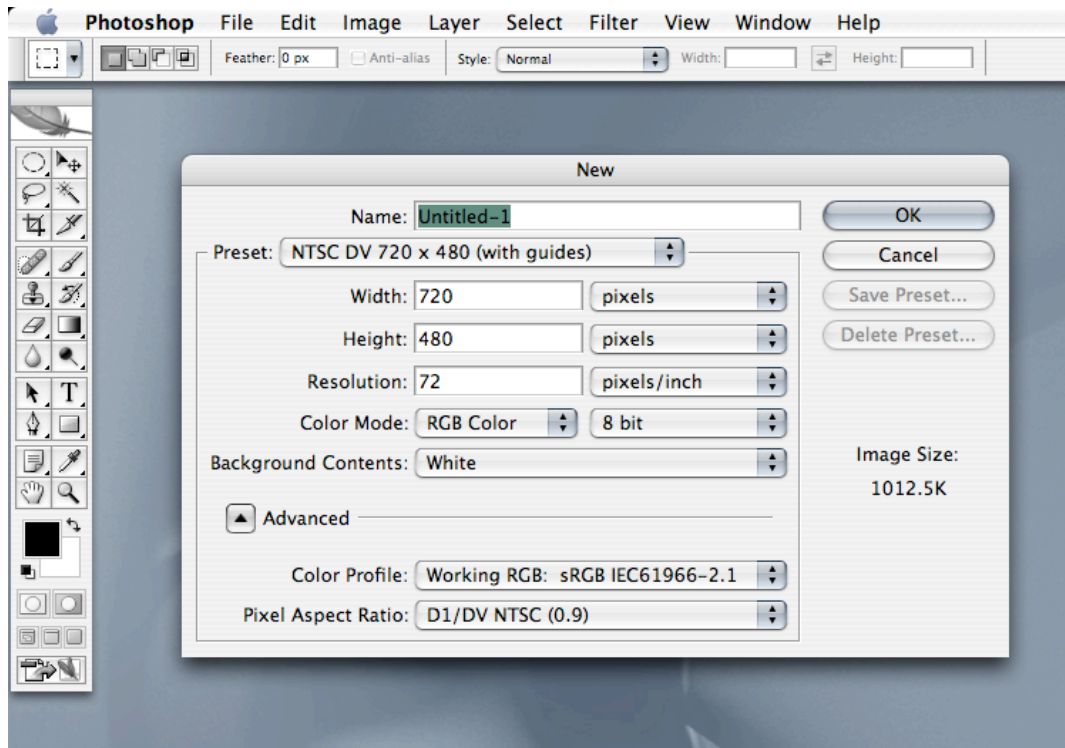
Images created in Photoshop, or still photos can be saved at a variety of quality settings or resolutions. Here are the very basics of importing an image created or edited in Photoshop into Final Cut Pro.

### USE RGB COLOR SCALE!!

Final Cut Pro does not recognize the CMYK color scale, and it won't allow you to import the image into your project. This can be adjusted in Photoshop under "Image->Mode->RGB."

### What resolution should I use?

In Photoshop, select "File->New." There are several templates available for you. Select "NTSC DV 720x480 (with guides)." This is the NTSC standard for video in North America (If editing in PAL, select PAL DV settings).



### When I zoom to my image, it becomes pixilated.

If you plan on zooming into your Photoshop image, you will want to create your image at a higher resolution than 72dpi. Final Cut Pro will adjust the image as you zoom into an image allowing a better looking picture because you will have more pixels in which to work. However, the larger you make the image, the slower the program will run because it has to adjust the image for every frame of video. Typically, you shouldn't need to make it larger than 300dpi, and that is still quite large.

### What are those blue lines?

The two sets of blue lines are referred to as "Title Safe" and "Action Safe" Space. All NTSC television sets show video a little bit differently. These guides guarantee that no matter what TV you watch your program, you will see text or movement. The innermost guide is the "Title Safe" space. All text or graphics should be located within this space. The outer guide is the "Action

Safe" space, you may not be able to detail, but can distinguish movement (e.g. CNN ticker tape scrolling at the bottom of the screen, you can see it, but not read it).

### Why is my circle an oval?

Digital Video's resolution is 720x480. NTSC video is 640x480. DV uses what is known as a "non-square pixel," it's a rectangle. When a normal 640x480 image is imported into a DV project, the square pixels are converted to non-square pixels adding 80 pixels to the image and making things look "skinny." By using the Photoshop NTSC DV preset, your image will have the proper sized pixels, making everything look the way you want it in your final output. The correct pixel aspect ratio is "D1/DV (.9).

### How to import still images from Photoshop into iMovie.

iMovie differs in settings for importing a still image. iMovie uses square pixels (as opposed to non-square pixels, mentioned above). Go into Photoshop and select "File->New..." you can select a 640x480 image setting, which will import into iMovie just fine.

